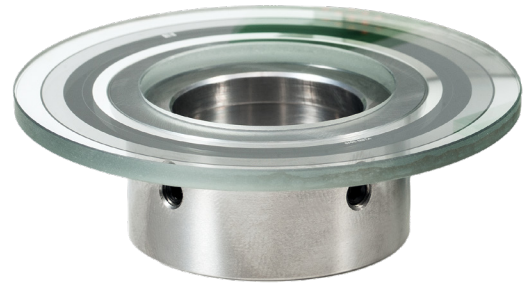




# DISC HUBS



We can manufacture disc hubs and glue them on various steels using different methods and types of glue. Also, we design drawings, produce and assemble disc hubs and provide coating according to custom requirements.

## CAPABILITIES

We glue disc hubs on various materials i.e. various steels including stainless, aluminum, etc.

Depending on the application and requirements, we glue using different methods and different glues (UV, Epoxy, etc.) ensuring radial and axial runout of the disc of up to 1-2  $\mu\text{m}$

We manufacture mechanical parts according to customer's drawings.

We design drawings, produce and assemble disc hubs and provide coating according to the customer's requirements.

Glass discs of up to 195 mm in diameter and thickness from 0.5 to 8 mm.

